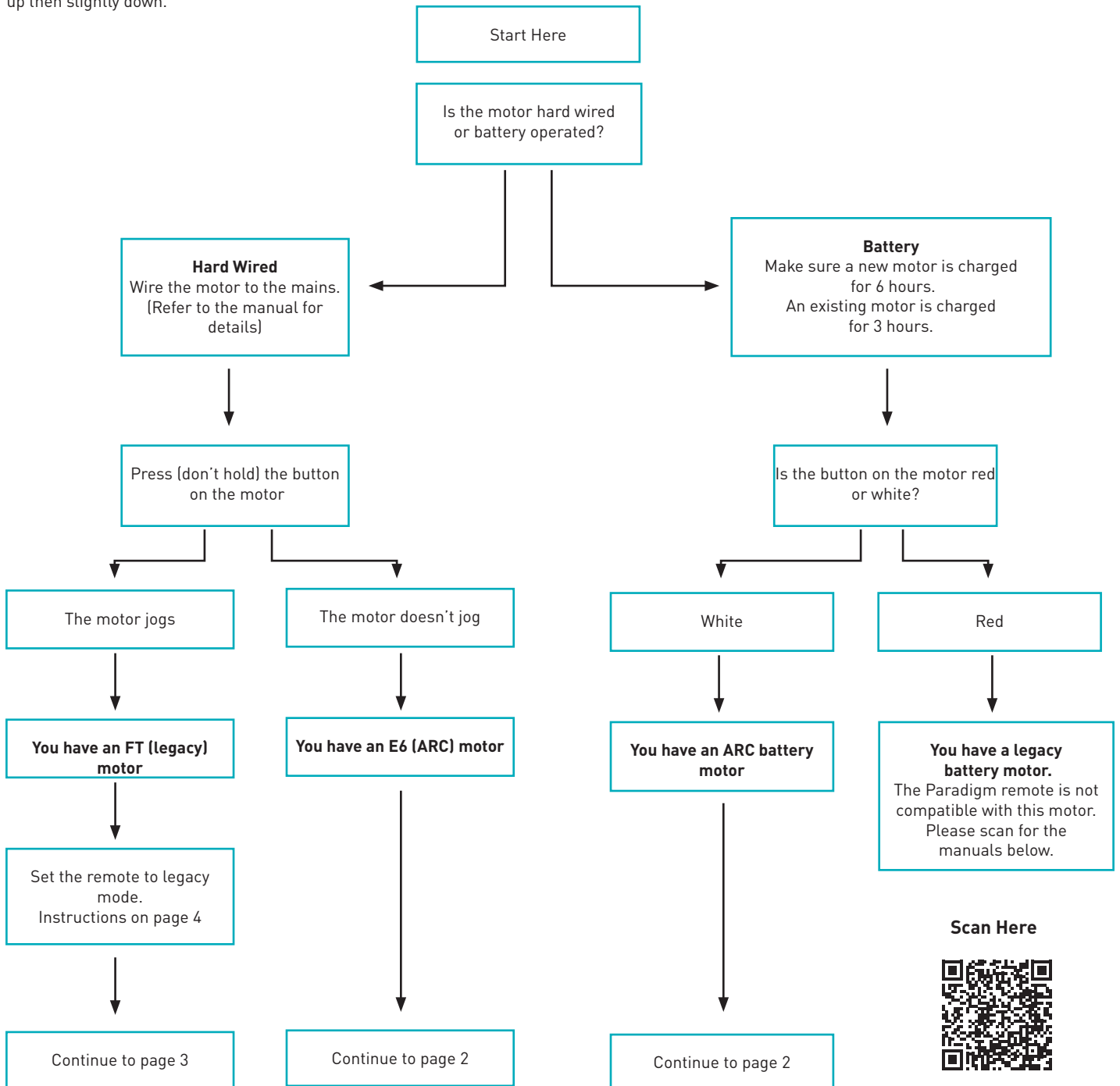


Determine which motor you have & electrical preparation

Please read these instructions prior to starting

A jog = The shade moving slightly up then slightly down.

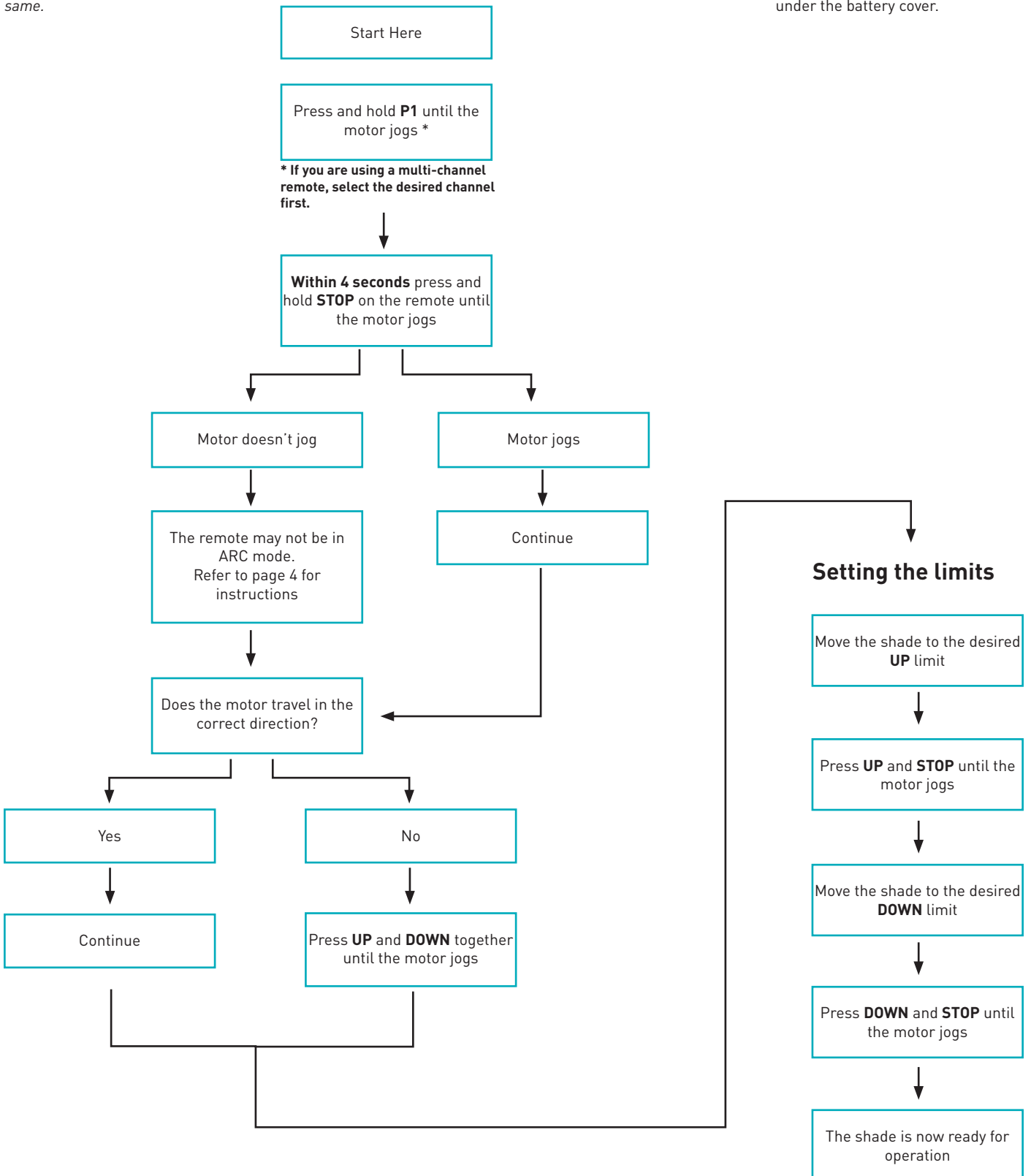


ARC Motor Programming

Please read these instructions prior to starting

The instructions for the hard-wired and battery ARC motor are the same.

P1 = The button on the motor head.
P2 = The button on the top left under the battery cover.



For the complete ARC battery motor manual. Scan Here.



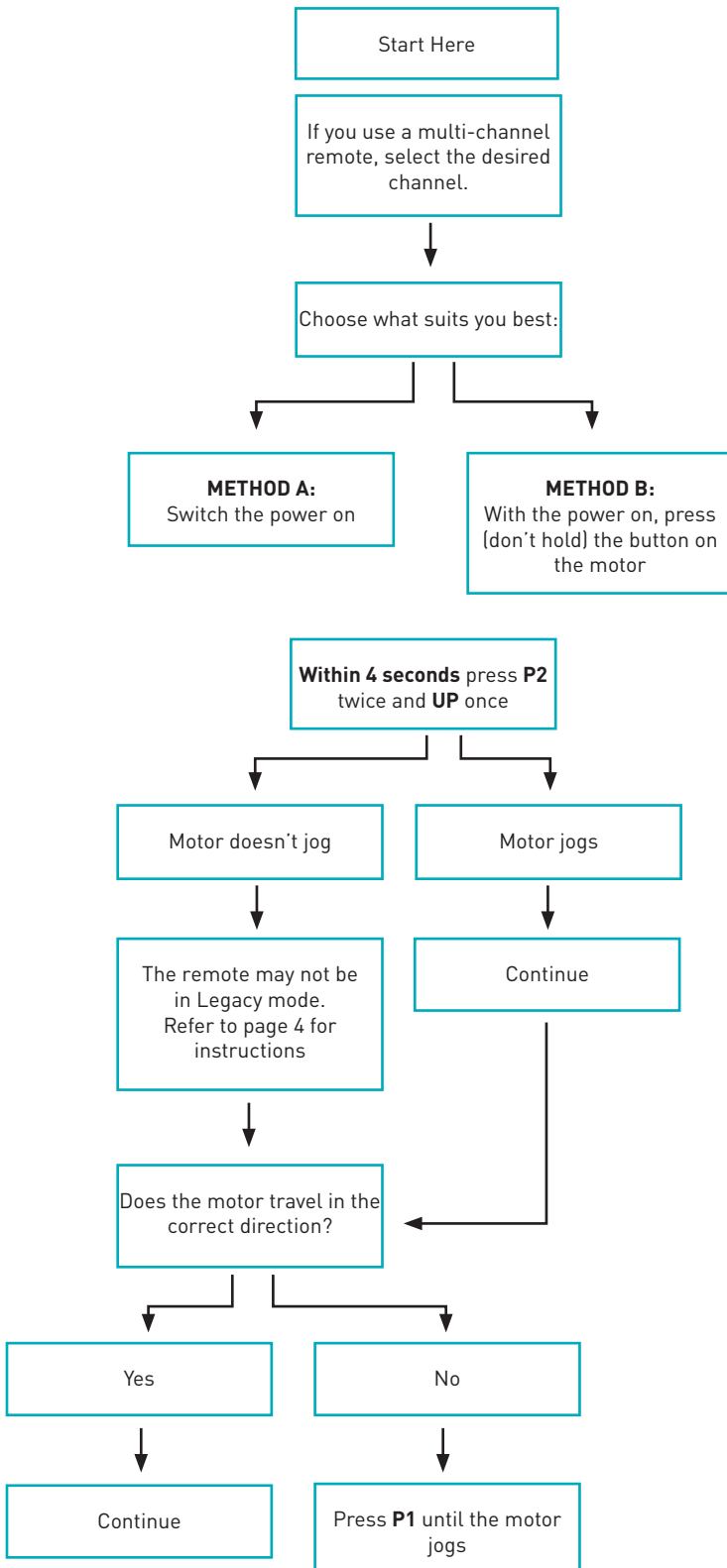
For the complete ARC hard-wired motor manual. Scan Here.



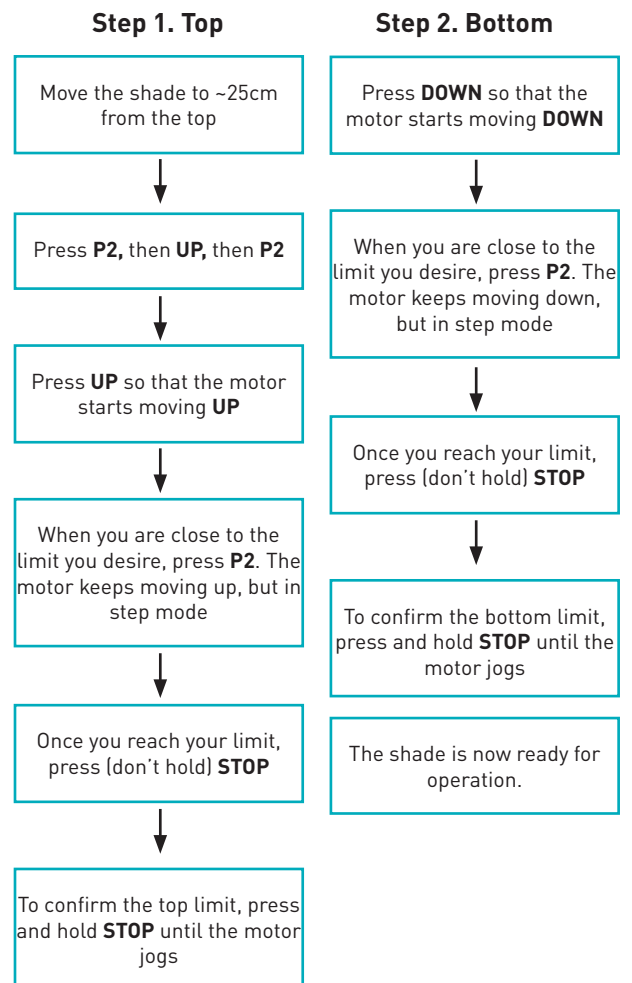
FT Motor Programming

Please read these instructions prior to starting

P1 = The button on the motor head.
P2 = The button on the top left under the battery cover.



Setting the limits



Important notes:

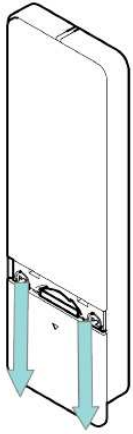
- You must set the top limit first.
- If you make a mistake at any point, go back to the start of the limit setting section.

For the complete FT motor manual. Scan Here.

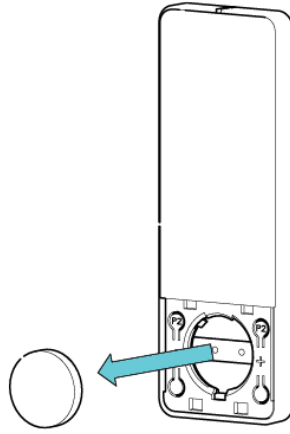


toggling the remote between ARC and Legacy mode

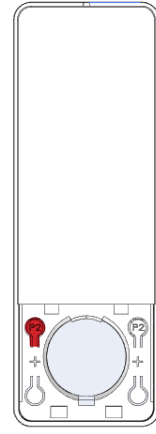
1. Turn the remote over and remove the battery cover



2. Remove the battery



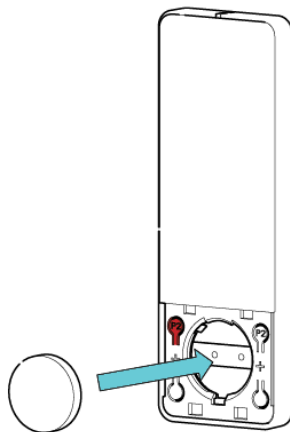
3. Locate the button labelled P2 at the top left



4. Press and hold P2

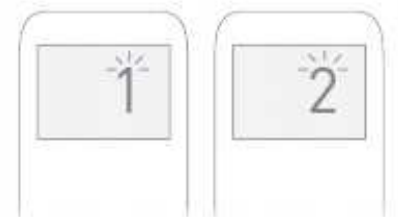


5. Reinsert the battery while still holding P2



6. While executing the above, watch the screen or LED to confirm

15 Channel Remote



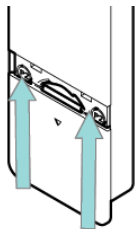
Screen flashes 5 times
1 = ARC Mode
2 = non-ARC mode (EL)

1 Channel Remote



1 flash = ARC Mode
2 flashes = non-ARC mode (EL)

7. Replace battery cover



Mode Change **Youtube Video**
on a 15 channel remote
Scan Here.



Mode Change **Youtube Video**
on a 1 channel remote
Scan Here.

