

AUTOMATE EL MOTORS / WALL MOUNTED REMOTE PROGRAMMING INSTRUCTIONS

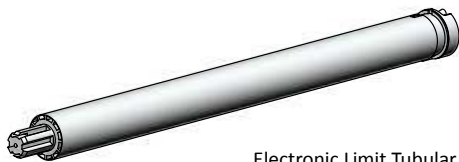
OCT 2014

These instructions show how to install, program and use Acmeda's electronic limit tubular motors:

- Automate EL S45
- Automate Q EL S45 (quiet motor)
- Automate EL S60 (with collision control technology)
- Automate EL A50 (for open awnings)
- Automate EL A50/C (for cassette awnings)
- Automate C EL (Curtain motor)

These motors can be controlled with Automate RF 400 series remote devices:

- Automate RF401 (single channel)
- Automate RF415 (15 channel)



Electronic Limit Tubular Motor



RF400 series Remote Control



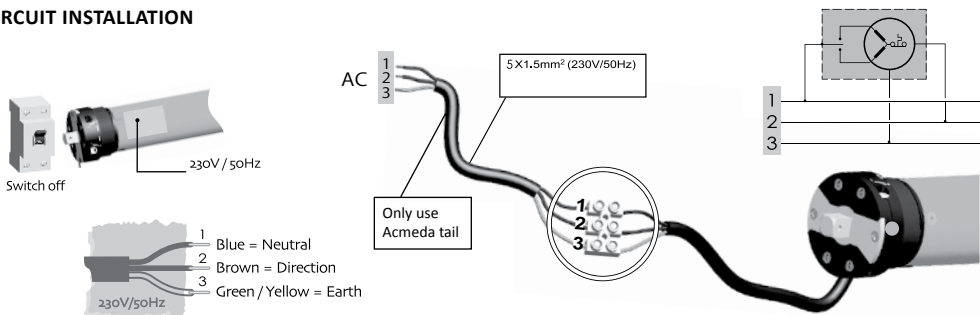
CE

All controls support 433MHz

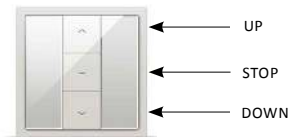
All controls support 230V/50Hz

Electronic
Electronic Limit + Built-in Receiver

CIRCUIT INSTALLATION



SINGLE CHANNEL RF401 REMOTE OVERVIEW



BEFORE YOU BEGIN:
 PLACE CR2450 (3V) BATTERY INTO REMOTE AND CHECK ALL MOTORS ARE SWITCHED OFF WHEN PRESSING BUTTON SEQUENCE ALWAYS PRESS AND RELEASE EACH BUTTON

STEP 1 PAIRING A MOTOR TO A REMOTE

- a. Switch Motor Power On (motor will beep)
- b. Ensure pairing commences within 10 seconds after motor has completed beeps and jolts
- c. Press UP + STOP at the same time, twice
- d. Press UP button once

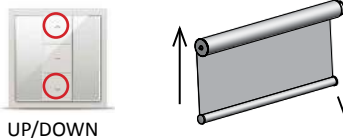


Motor will beep when each button is pressed and to confirm pairing it will beep 3 times and jolt.

STEP 2 CHECK DIRECTION

Press UP or DOWN buttons and ensure blind is moving in correct direction. If working correctly proceed to Step 3.

Press and release buttons.



TO CORRECT BLIND DIRECTION

Press button on motor head for 5 seconds to change orientation of blind.

Motor beeps & jolts to confirm change of direction.

Check blind direction again before proceeding to Step 3.



STEP 3 PUT MOTOR IN LIMIT SETTING MODE

- a. Press UP + STOP buttons at the same time
- b. Press UP button once
- c. Press UP + STOP buttons at the same time



STEP 4 SET UPPER LIMIT

- a. Set desired upper limit position, using the UP button.
Press DOWN to readjust blind to desired position.
- b. When a more accurate setting is required put motor in stepping mode by pressing UP+STOP at the same time while motor is moving UP/DOWN
- c. Once blind is at desired position press STOP for 5 seconds until motor jolts.



Motor will jolt to confirm limit.

STEP 5

SET LOWER LIMIT

- Set desired lower limit position using the DOWN button.
Press UP to readjust blind to desired position.
- When a more accurate setting is required put motor in stepping mode by pressing UP+STOP at the same time while motor is moving UP/DOWN
- Once blind is at desired position, press STOP for 5 seconds until motor jolts.
Motor will jolt to confirm limit.



UP/DOWN



STOP
(for 5 secs)

FOR AUTOMATE Q S45 & S60 MOTOR ONLY

SET FAVOURITE POSITION

- Set desired favorite position using UP or DOWN buttons.
 - Press STOP for 5 secs until motor confirms position.
To confirm limit motor will jolt.
- To send blind to favourite position press STOP button for 5 secs.



UP/DOWN



STOP
(for 5 secs)

CANCEL LIMITS

- Press UP + STOP at the same time and release.
- Press DOWN button once.
- Press UP + STOP at the same time and release.



UP/STOP



DOWN (x1)



UP/STOP

RETURN TO FACTORY SETTINGS

- Press UP + STOP at the same time and release.
- Press STOP button once.
- Press UP + STOP at the same time and release.



UP/STOP



STOP (x1)



UP/STOP

PROGRAMMING A 15 CHANNEL WALL MOUNTED REMOTE IN 5 SIMPLE STEPS

FIFTEEN CHANNEL RF415 REMOTE OVERVIEW



BEFORE YOU BEGIN:
PLACE CR2450 (3V) BATTERY INTO REMOTE
AND CHECK ALL MOTORS ARE SWITCHED OFF
WHEN PRESSING BUTTON SEQUENCE ALWAYS
PRESS AND RELEASE EACH BUTTON

STEP 1

PAIRING A MOTOR TO A REMOTE

- Switch Motor Power On (motor will beep)
- Ensure pairing commences within 10 seconds after motor has completed beeps and jolts
- Press P2 twice
- Press UP once



P2 (x2)



UP (x1)

Motor will beep when each button is pressed and to confirm pairing it will beep 3 times and jolt.

STEP 2

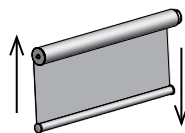
CHECK DIRECTION

Press UP or DOWN buttons and ensure blind is moving in correct direction.
If working correctly proceed to Step 3.

Press and release buttons.



UP/DOWN



TO CORRECT BLIND DIRECTION

Press button on motor head for 5 seconds to change orientation of blind.

Motor beeps & jolts to confirm change of direction.

Check blind direction again before proceeding to Step 3.



STEP 3

PUT MOTOR IN LIMIT SETTING MODE

- Press P2 button once
- Press UP button once
- Press P2 button once



P2 (x1)



UP (x1)



P2 (x1)

STEP 4

SET UPPER LIMIT

- Set desired upper limit position, using the UP button.
Press DOWN to readjust blind to desired position.
- When a more accurate setting is required put motor in stepping mode by pressing UP+STOP at the same time while motor is moving UP/DOWN
- Once blind is at desired position press STOP for 5 seconds until motor jolts.
Motor will jolt to confirm limit.



UP/DOWN



STOP
(for 5 secs)

STEP 5

SET LOWER LIMIT

- Set desired lower limit position using the DOWN button.
Press UP to readjust blind to desired position.
- When a more accurate setting is required put motor in stepping mode by pressing UP+STOP at the same time while motor is moving UP/DOWN
- Once blind is at desired position, press STOP for 5 seconds until motor jolts.
Motor will jolt to confirm limit.



UP/DOWN



STOP
(for 5 secs)

FOR AUTOMATE Q S45 & S60 MOTOR ONLY

SET FAVOURITE POSITION

Refer Page 3 for instructions.

CANCEL LIMITS

- Press P2 button once
- Press DOWN button once
- Press P2 button once



P2 (x1)



DOWN (x1)



P2 (x1)

RETURN TO FACTORY SETTINGS

- Press P2 button once
- Press STOP button once
- Press P2 button once



P2 (x1)



STOP (x1)



P2 (x1)